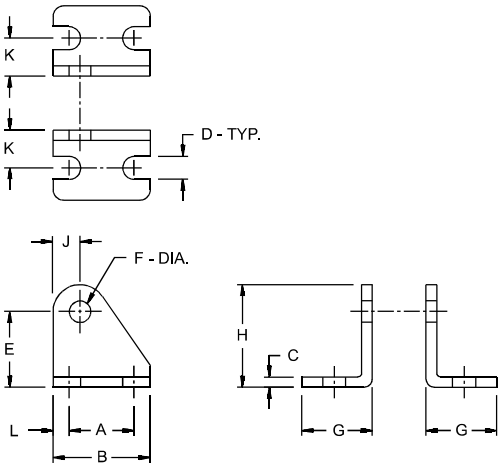
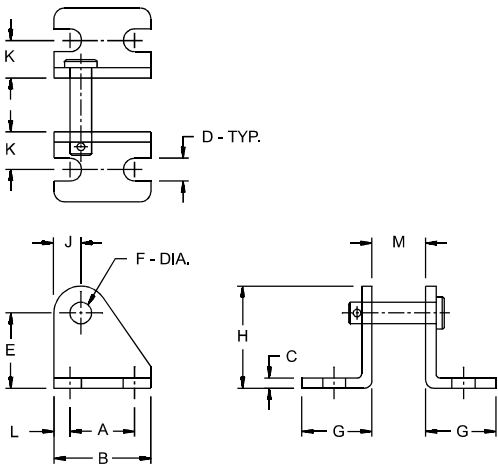


Stainless Steel Series Pivot Brackets



Pivot Bracket - Style I

Bore	Pivot Bkt. No.	Dimension										
		A	B	C	D	E	F	G	H	J	K	L
7/16"	M13S	.50	.75	.06	.18	.56	.15	.50	.77	.20	.28	.12
9/16"	M13S	.50	.75	.06	.18	.56	.15	.50	.77	.20	.28	.12
3/4"	M23S	.75	1.12	.12	.26	.87	.25	.81	1.18	.31	.43	.18
7/8"	M23S	.75	1.12	.12	.26	.87	.25	.81	1.18	.31	.43	.18
1 1/16"	M23S	.75	1.12	.12	.26	.87	.25	.81	1.18	.31	.43	.18
1 1/4"	M23S	.75	1.12	.12	.26	.87	.25	.81	1.18	.31	.43	.18
1 1/2"	M63S	1.00	1.50	.12	.26	1.37	.37	1.00	1.75	.37	.62	.25

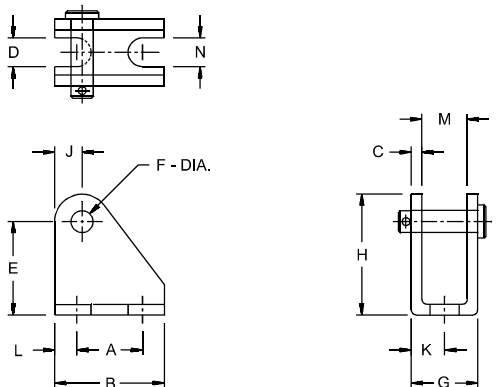


Pivot Bracket - Style II

Bore	Pivot Bkt. No.	Dimension											
		A	B	C	D	E	F	G	H	J	K	L	M
7/16"	M13SP	.50	.75	.06	.18	.56	.15	.50	.77	.20	.28	.12	.31
9/16"	M13SP	.50	.75	.06	.18	.56	.15	.50	.77	.20	.28	.12	.31
3/4"	M23SP	.75	1.12	.12	.26	.87	.25	.81	1.18	.31	.43	.18	.37
7/8"	M23SP	.75	1.12	.12	.26	.87	.25	.81	1.18	.31	.43	.18	.37
1 1/16"	M23SP	.75	1.12	.12	.26	.87	.25	.81	1.18	.31	.43	.18	.37
1 1/4"	M53SP	.75	1.12	.12	.26	.87	.25	.81	1.18	.31	.43	.18	.50
1 1/2"	M63SP	1.00	1.50	.12	.26	1.37	.37	1.00	1.75	.37	.62	.25	.62
1 3/4"	M73SP	1.00	1.50	.25	.34	1.37	.37	1.12	1.75	.37	.68	.25	.62
2"	M93	1.00	1.50	.25	.34	1.37	.37	1.12	1.75	.37	.68	.25	.75
3"	M103SP	1.25	1.75	.25	.26	1.75	.50	1.50	2.25	.50	.87	.25	.87

NOTES

- Style II Brackets are only for models having the (-2) Pivot Bushing Option.
- Pivot Pin & Cotter Pin included with each Style II Bracket ordered.



Pivot Bracket - Style III

Bore	Pivot Bkt. No.	Dimension												
		A	B	C	D	E	F	G	H	J	K	L	M	N
5/16"	M03SP	.37	.62	.04	15*	.40	.12	.36	.53	.12	.18	.12	.26	.15*
3/4"	M33S	.75	1.18	.12	.26	.87	.25	.62	1.18	.31	.31	.21	.38	.26
7/8"	M33S	.75	1.18	.12	.26	.87	.25	.62	1.18	.31	.31	.21	.38	.26
1 1/16"	M33S	.75	1.18	.12	.26	.87	.25	.62	1.18	.31	.31	.21	.38	.26
1 1/4"	M53S	.75	1.25	.12	.32	1.06	.25	.76	1.37	.31	.37	.25	.51	.32*

NOTES

- Style III Brackets are only for models having the (-2) Pivot Bushing Option.
- Pivot Pin & Cotter Pin included with each Style III Bracket ordered.
- *These are thru hole diameters, not slots as shown